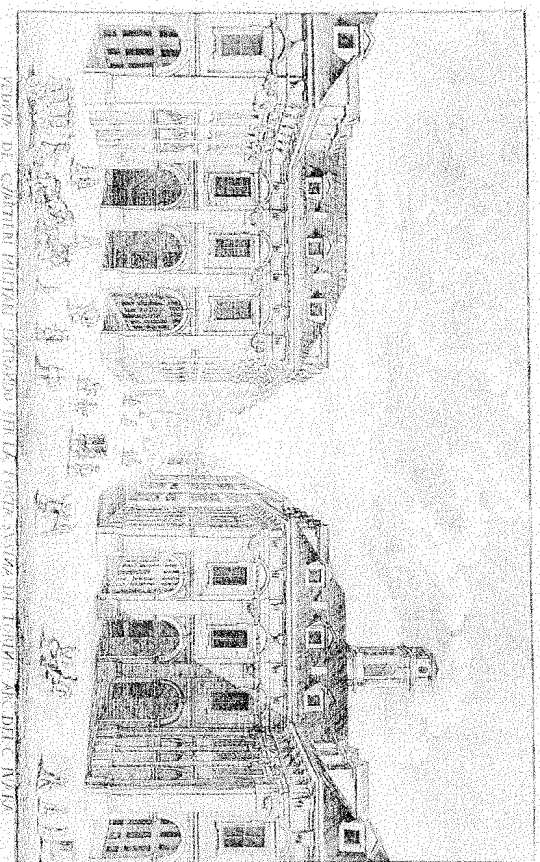


CITTA' DI TORINO

Divisione Servizi Tecnici ed Edilizia per i Servizi
Culturali – Sociali – Commerciali
Settore Edifici per la Cultura
Piazza Corpus Domini 17/E – 10122 Torino

**RECUPERO FUNZIONALE
DELL'EDIFICIO DI VIA DEL CARMINE 14
AD USO ARCHIVI ED ATTIVITA' CULTURALI**



PROGETTO ESECUTIVO

Responsabile Unico di Procedimento e Dirigente del Settore	Arch. Rosalba Stura
Progettista opere architettoniche	Arch. Emanuela Lavezzo
Progettista opere strutturali	Ing. Gianfranco Giovagnetti
Progettista opere impiantistiche	Ing. Alfonso Farnà
Progettista della sicurezza – Collaboratore alle opere strutturali	Ing. Flavio Aquilano
Supporto al R.U.P. per le opere strutturali	Ing. Elena Grillone
Collaboratore progetto opere architettoniche e strutturali	Geom. Bartolo Saullo
Collaboratore progetto opere architettoniche e sicurezza	Geom. Fabrizio Passantino
Collaboratore progetto opere architettoniche	Arch. Michellina Pirrone
Collaboratori progetto opere impiantistiche	P.I. Francesco Ferrari P.I. Maurizio Genovese

PROGETTO OPERE STRUTTURALI

SCALA	1:50/1:10/1:5		
SCALA PLOT	ARMATURE METALLICHE SCALA	S31	
1:5	VERSO CORSO VALDOCCO		
REV	MODIFICHE	DATA	DISIGNATORE
	Prima Revisione	05/11/2010	Ing. Gianfranco GIOVAGNETTI

**MATERIALI DA UTILIZZARE PER LE NUOVE TRAVI
E I NUOVI SOLAI**

Calcestruzzo classe di resistenza minima C25 / 30

Consistenza S3 per rampe scale e strutture inclinate e S4 per
setti, travi e solai

Granulometria inerti :

sabbia da 0 a 3 mm / ghiaia da 0 a 16 mm.

Acciaio B450 C

Le Travi :

T 1 e T 3 alla quota +0,00 si trovano sulla Tav S16

T 48 e T 49 alla quota +534 si trovano sulla Tav S18

T 61 e T 62 alla quota +944 si trovano sulla Tav S20

T 56 e T 58 alla quota +1334 si trovano sulla Tav S22

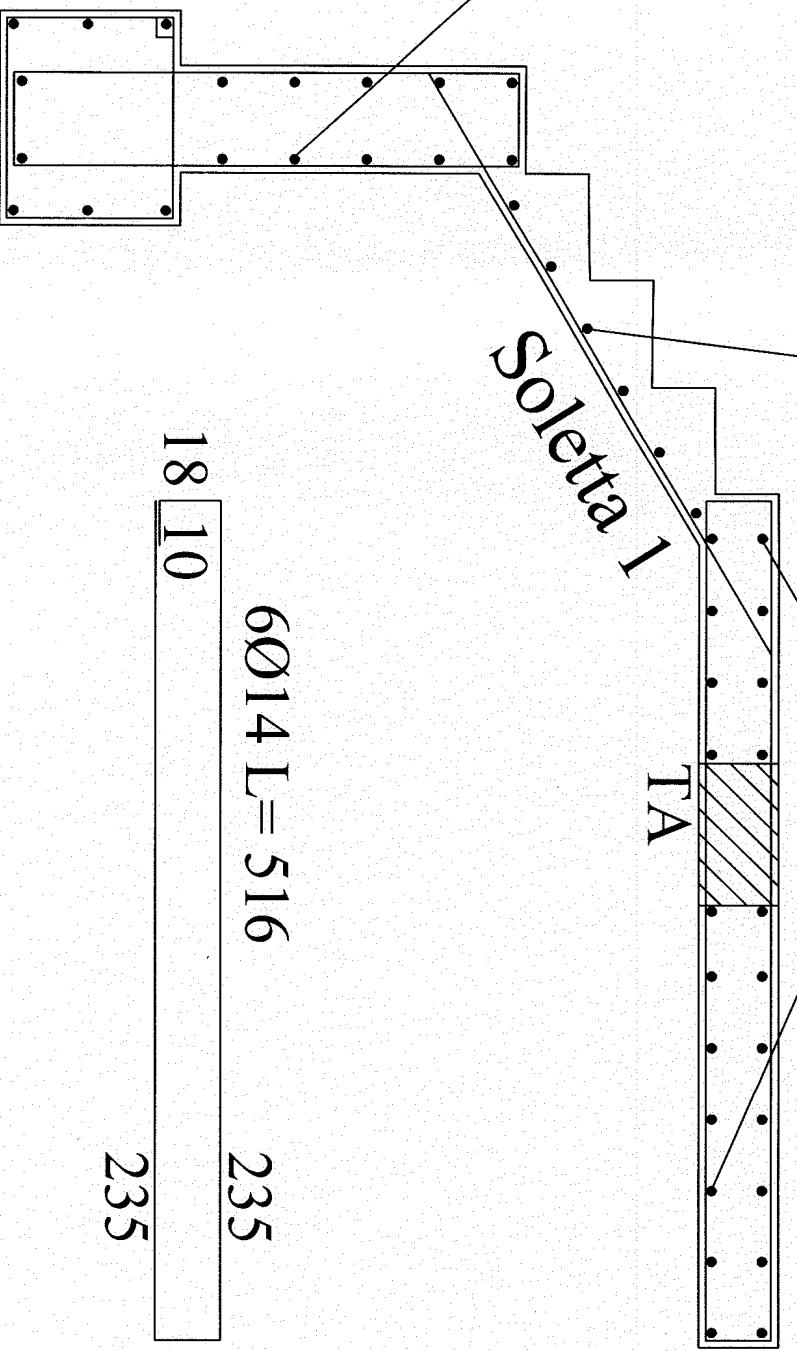
T 58 e T 59 alla quota +1749 si trovano sulla Tav S24

ripartitori Ø8/20 cm L=127

ripartitori Ø8/20 cm L=320

Soletta I

TA



6Ø14 L= 516

18 10

235

18

6Ø12 L=350

139

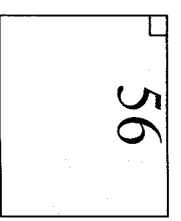
26

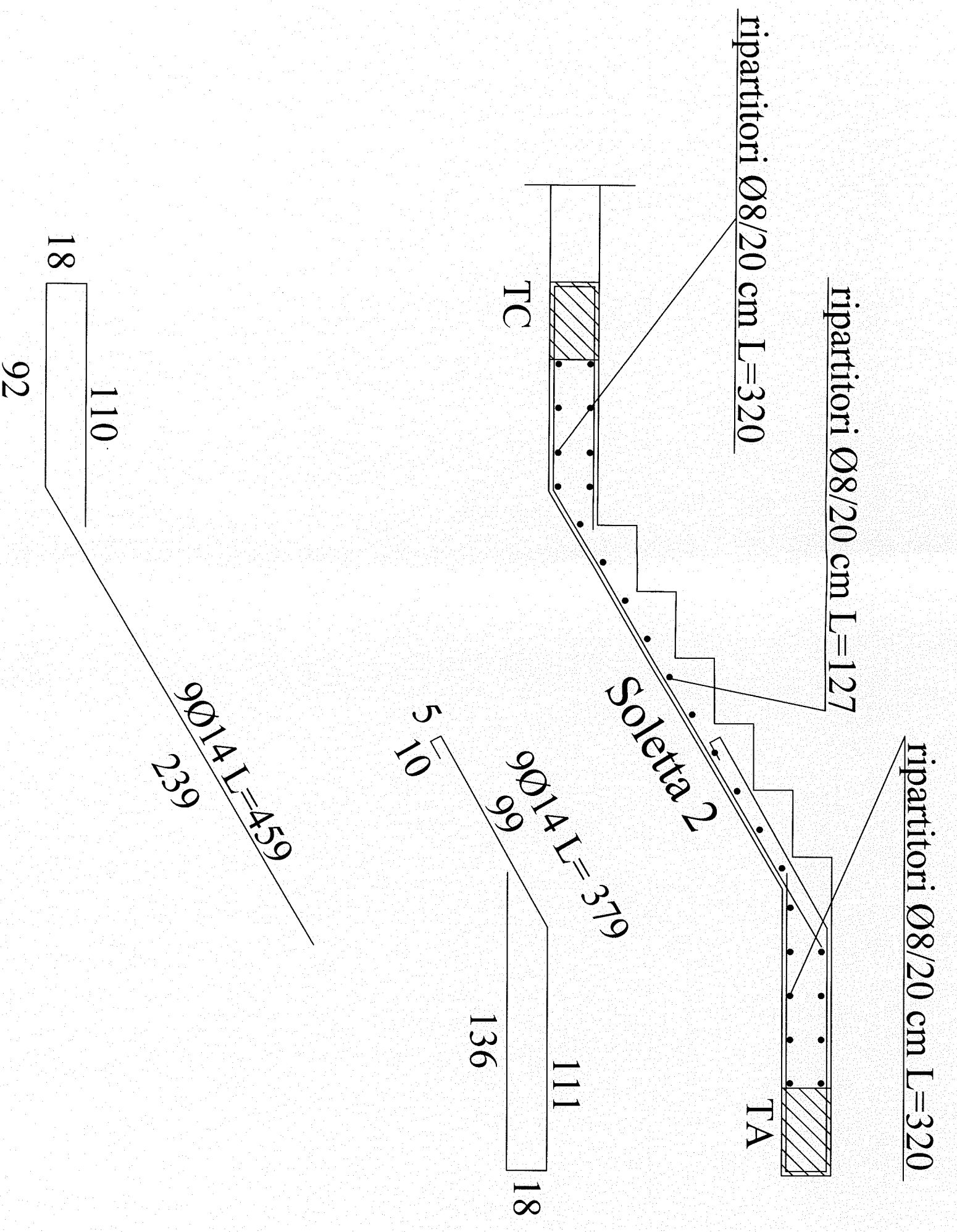
6Ø14 L=188

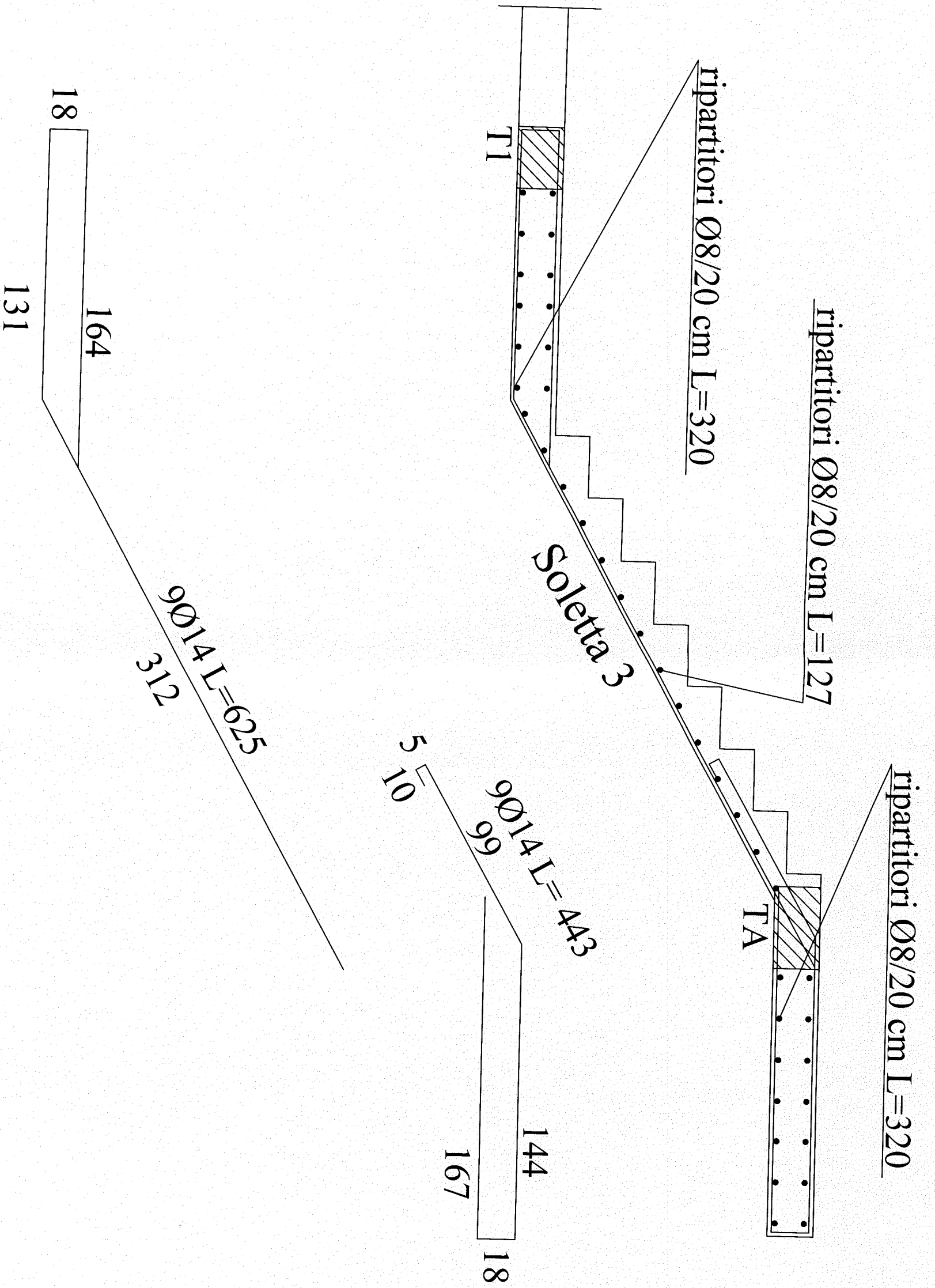
6Ø12 L= 230

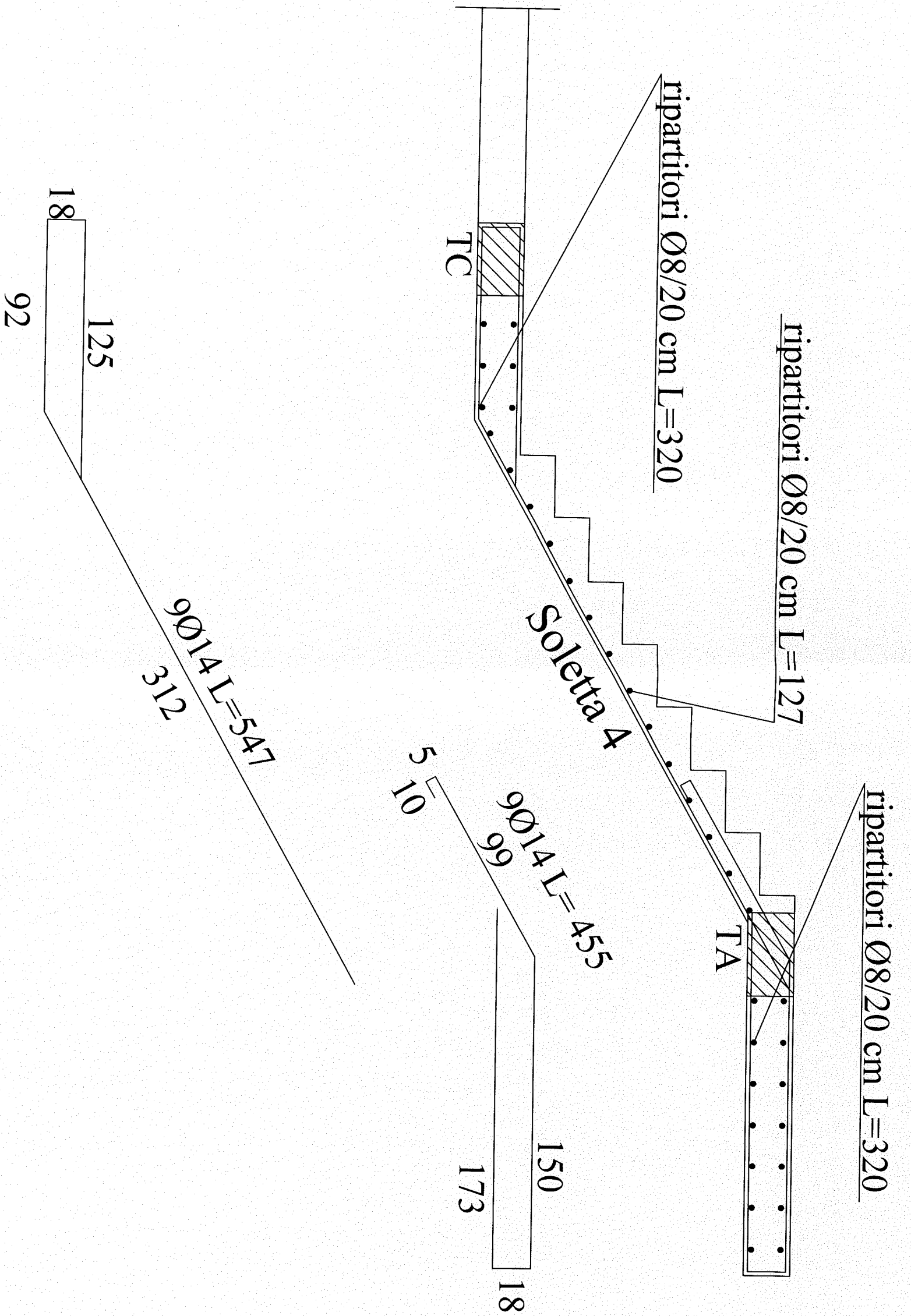
56

46







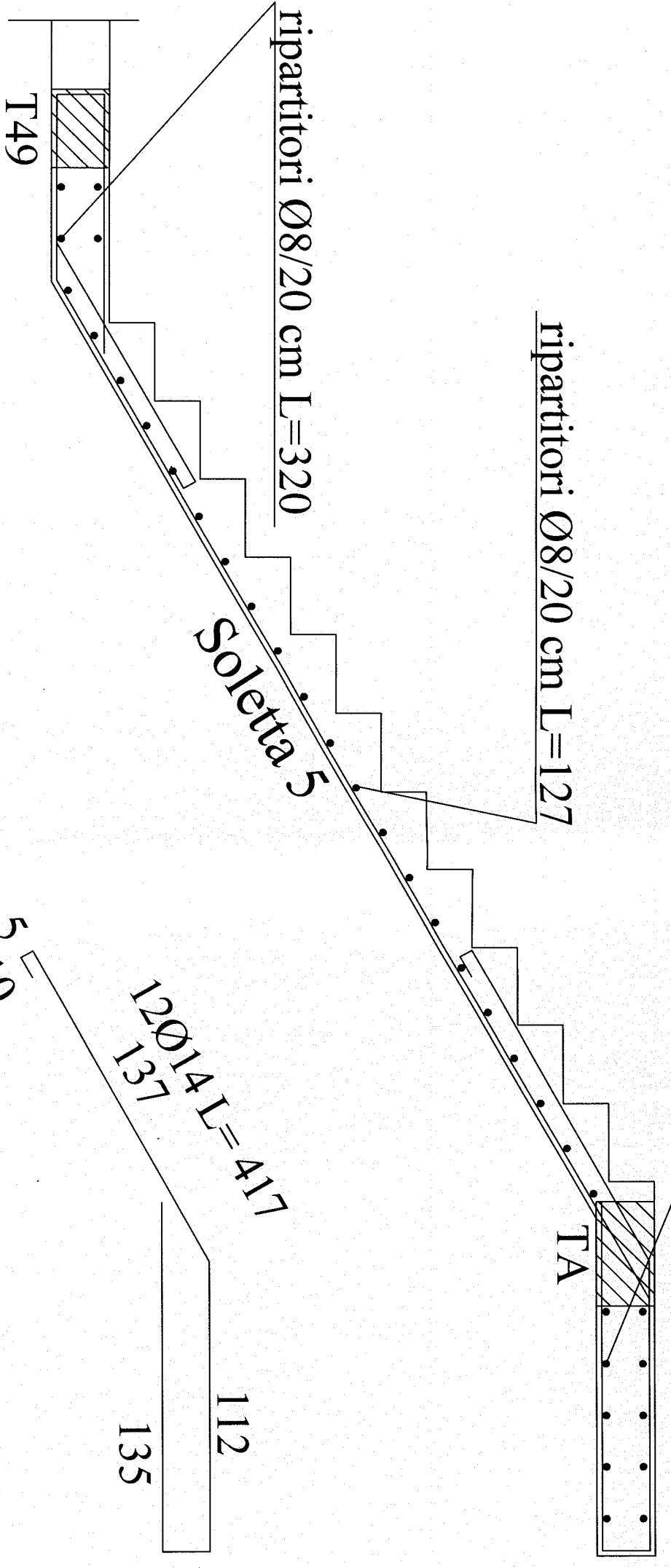


ripartitori Ø8/20 cm L=320

ripartitori Ø8/20 cm L=127

ripartitori Ø8/20 cm L=320

Soletta 5



12Ø14 L=417
137
5
10

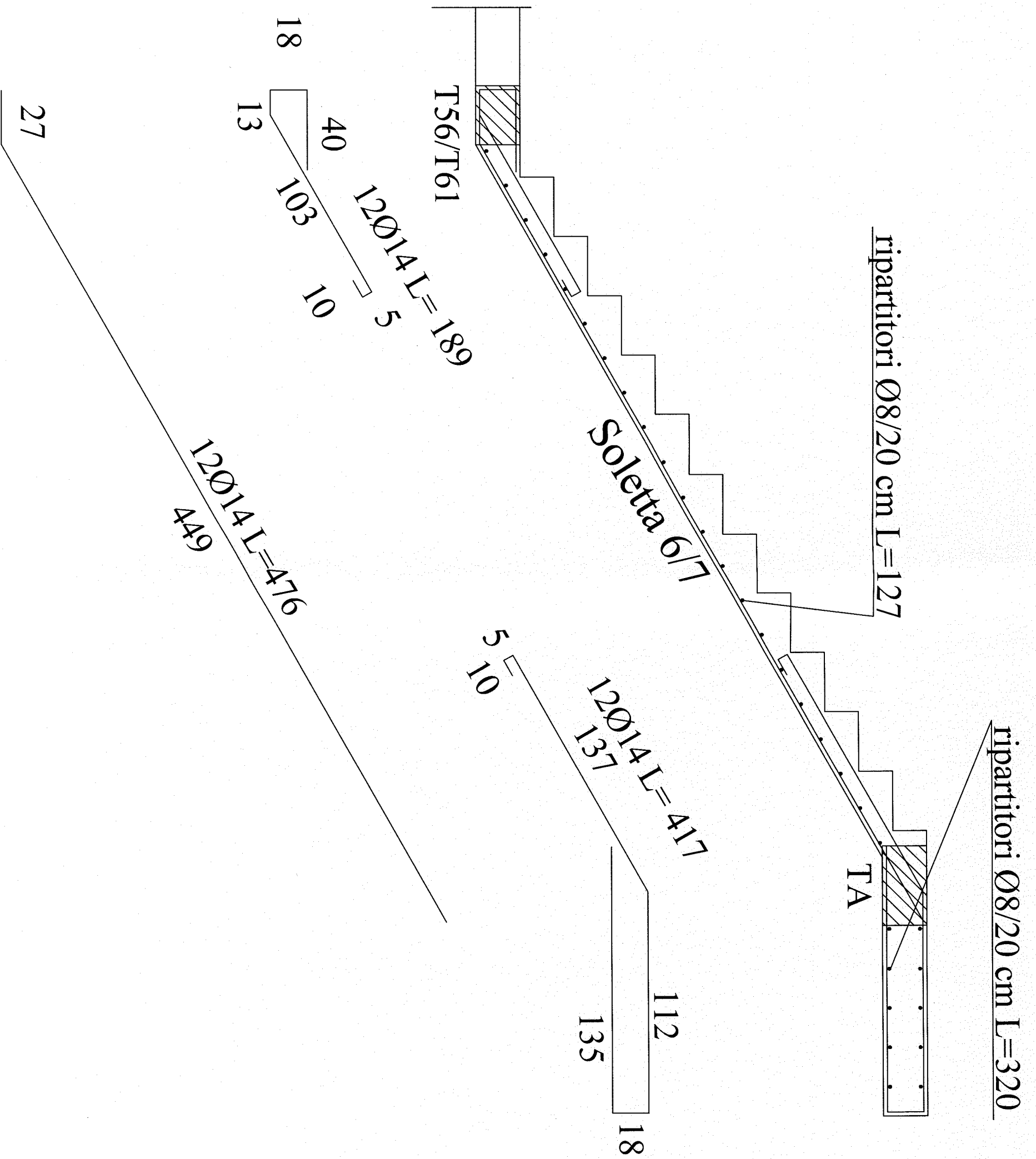
112
135
18

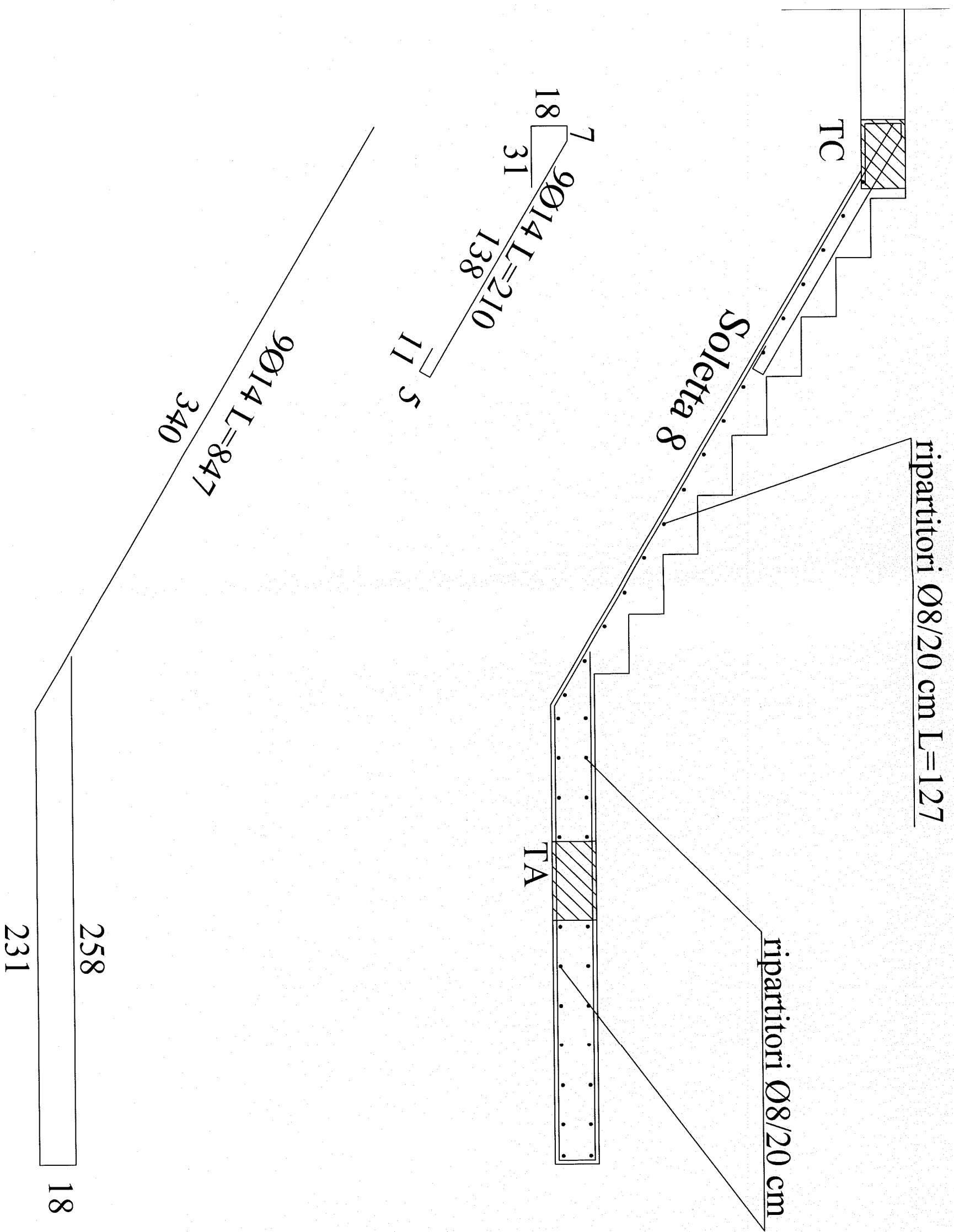
12Ø14 L=252
5

100
106
10
13
18

12Ø14 L=521
449

72





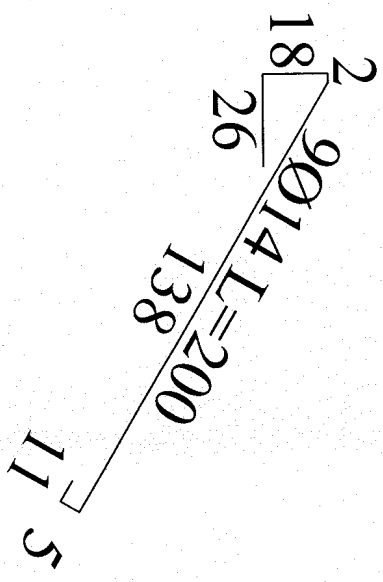
ripartitori Ø8/20 cm L=127

ripartitori Ø8/20 cm

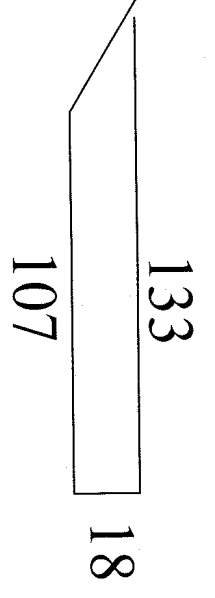
Soletta 9

TA

T1



9Ø14 L=593
335



ripartitori Ø8/20 cm

TC

ripartitori Ø8/20 cm L=127

ripartitori Ø8/20 cm

Soletta 10

TA

18 68 92 9Ø14 L=325 132

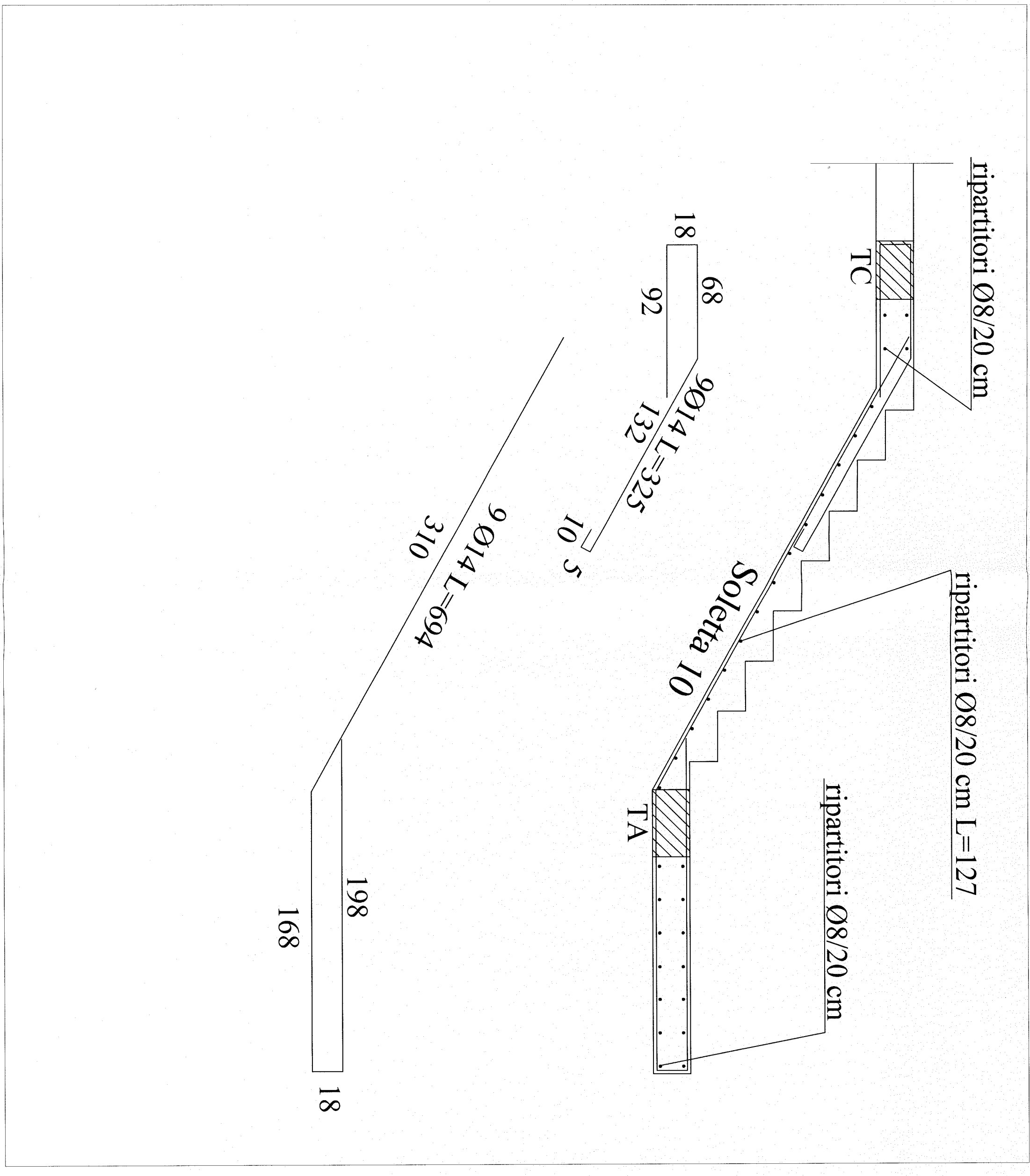
10 5

9Ø14 L=694 310

198

168

18



ripartitori Ø8/20 cm

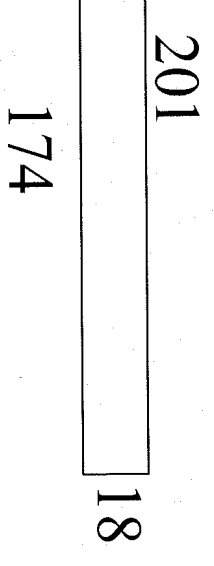
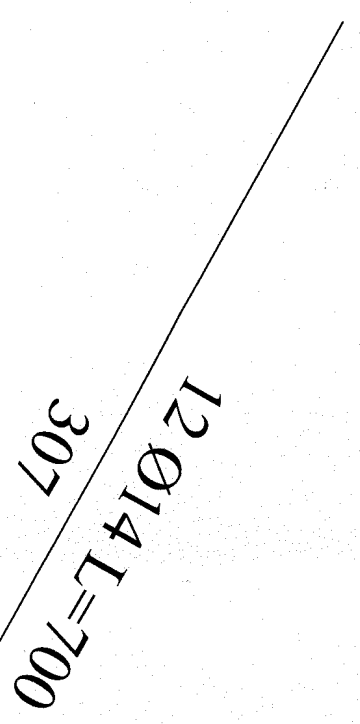
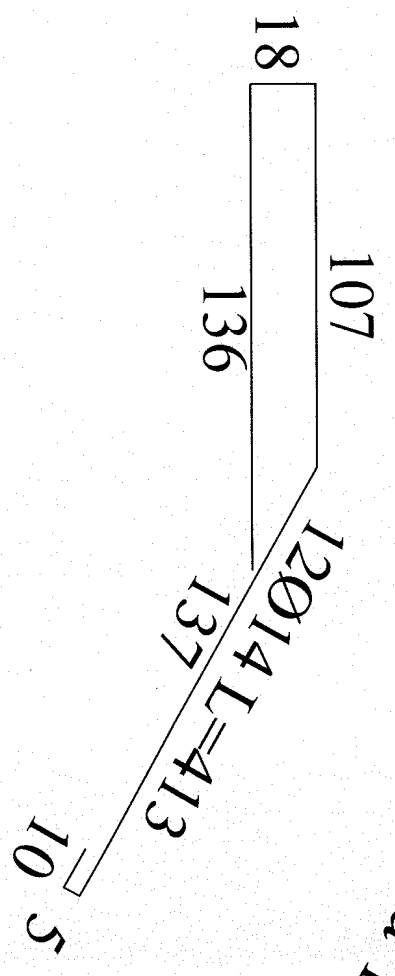
T49

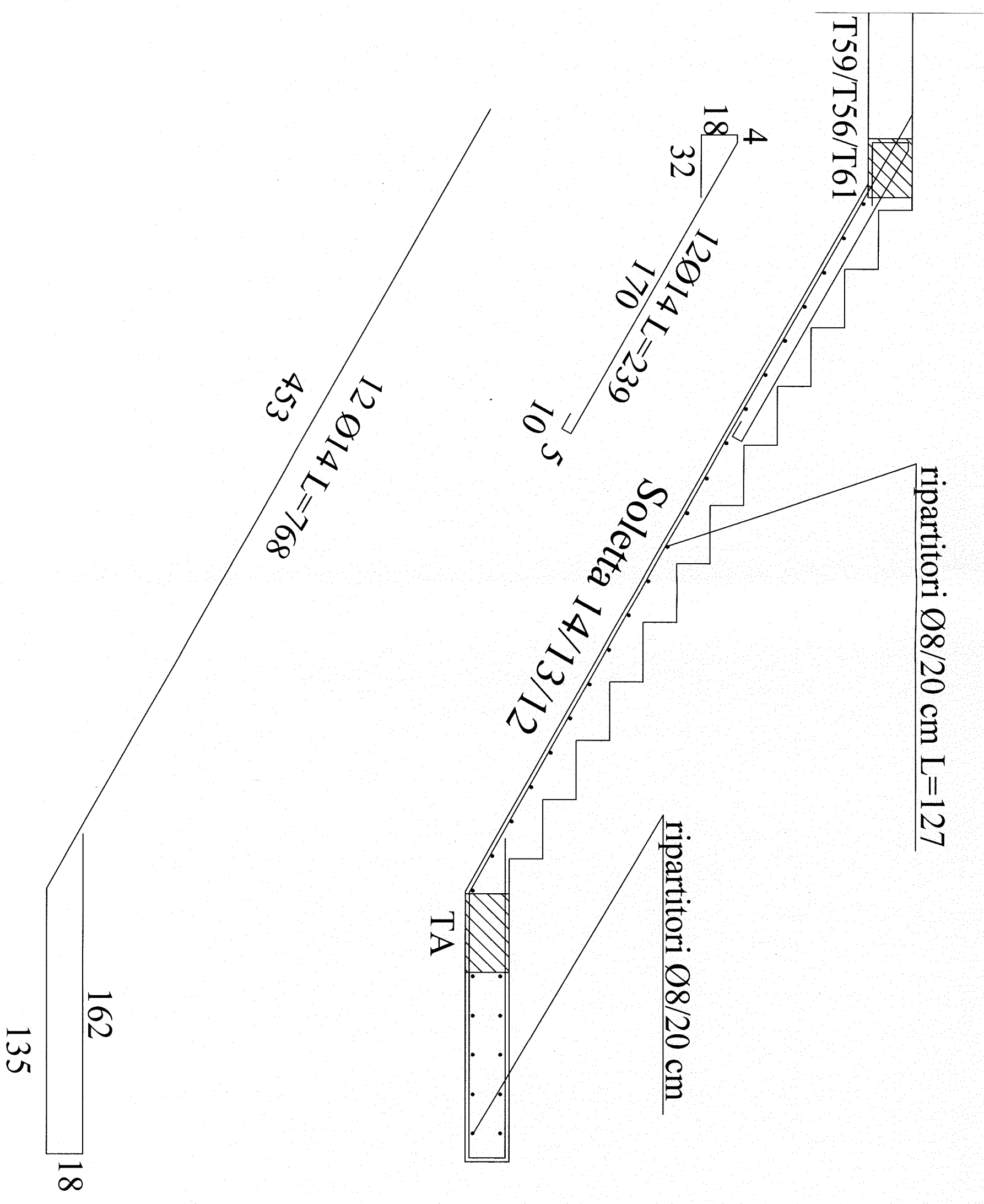
ripartitori Ø8/20 cm L=127

ripartitori Ø8/20 cm

Soletta IJ

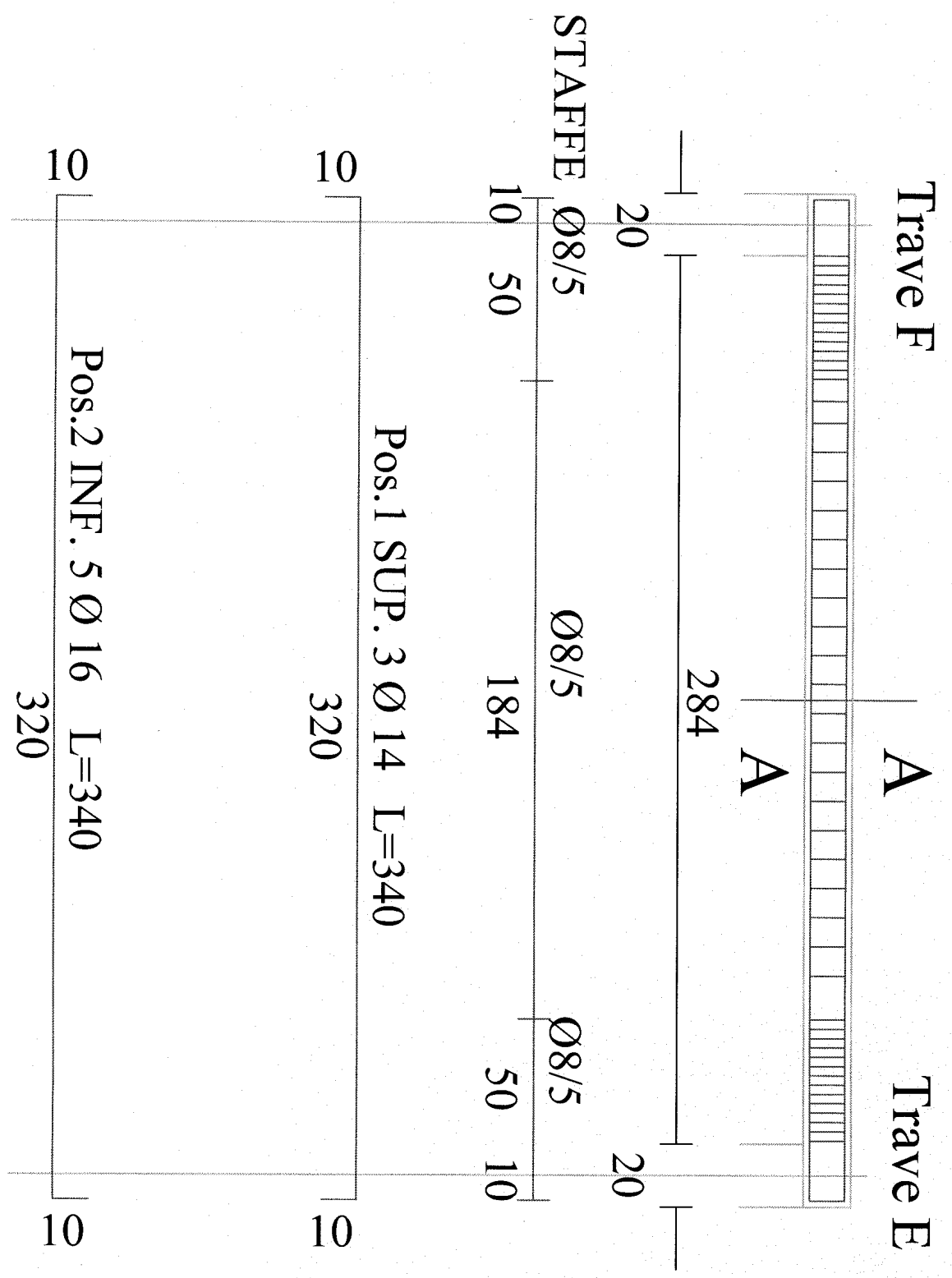
TA





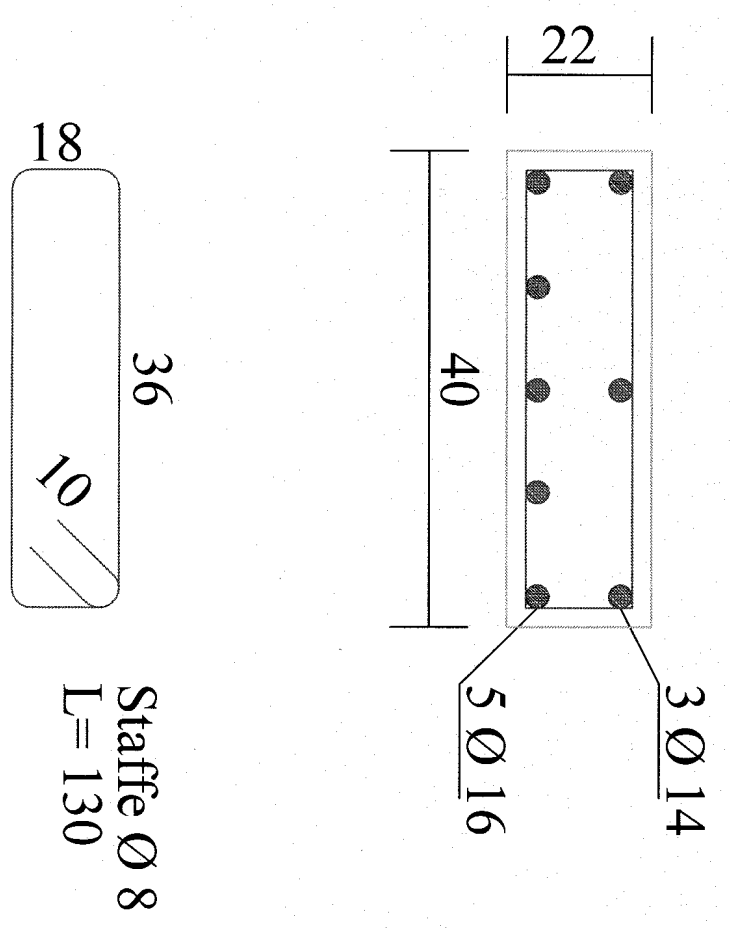
Trave A (40x22)

n° 7 travi



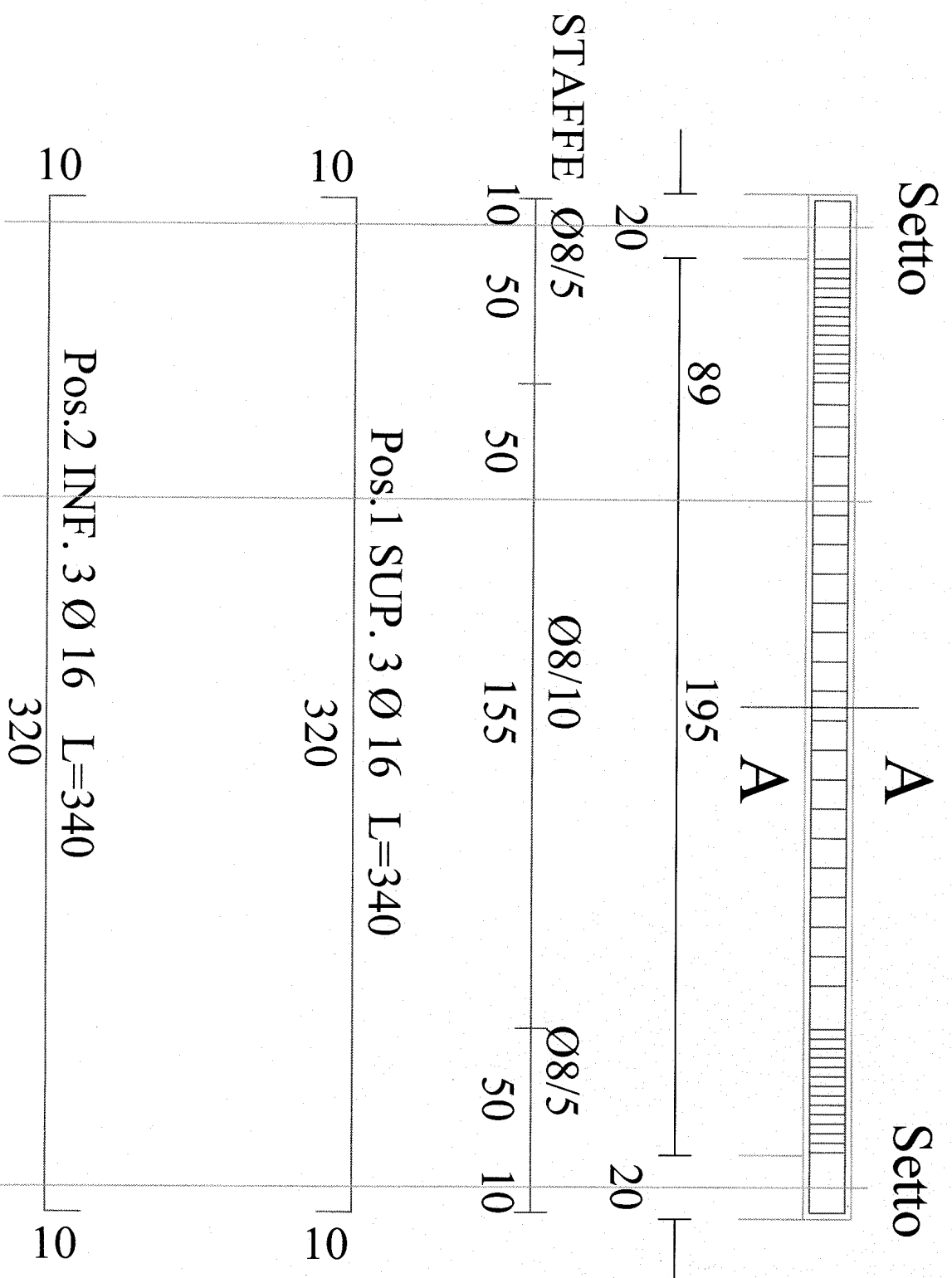
POS	DIAM Ø (mm)	LUNGH (cm)
1 SUP.	3 Ø 14	L=340
2 INF.	5 Ø 16	L=340

Sez. A-A



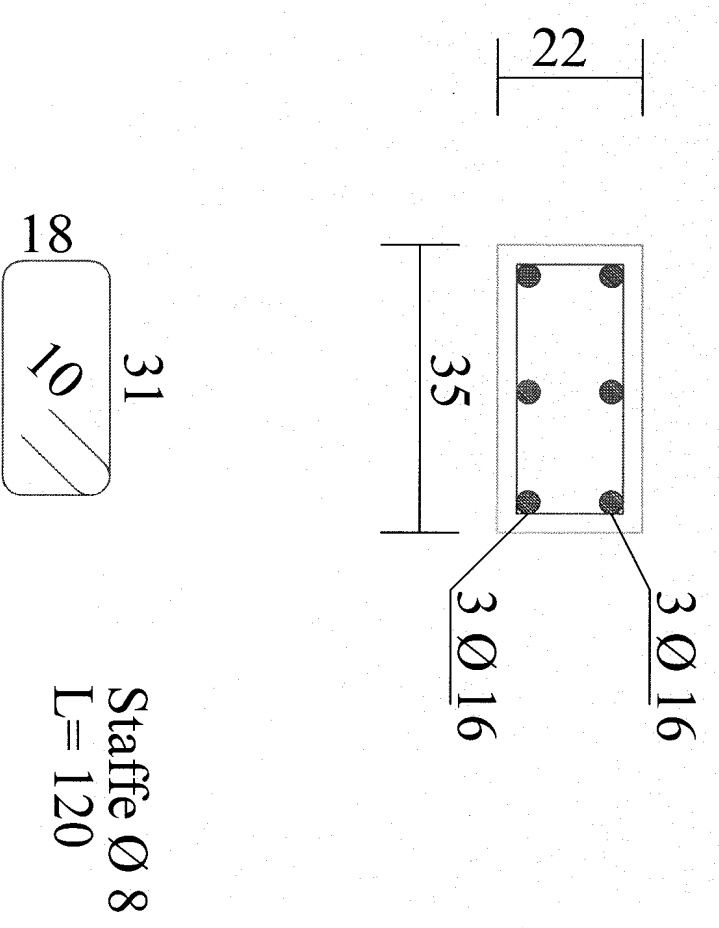
Trave C (35x22)

n° 2 travi



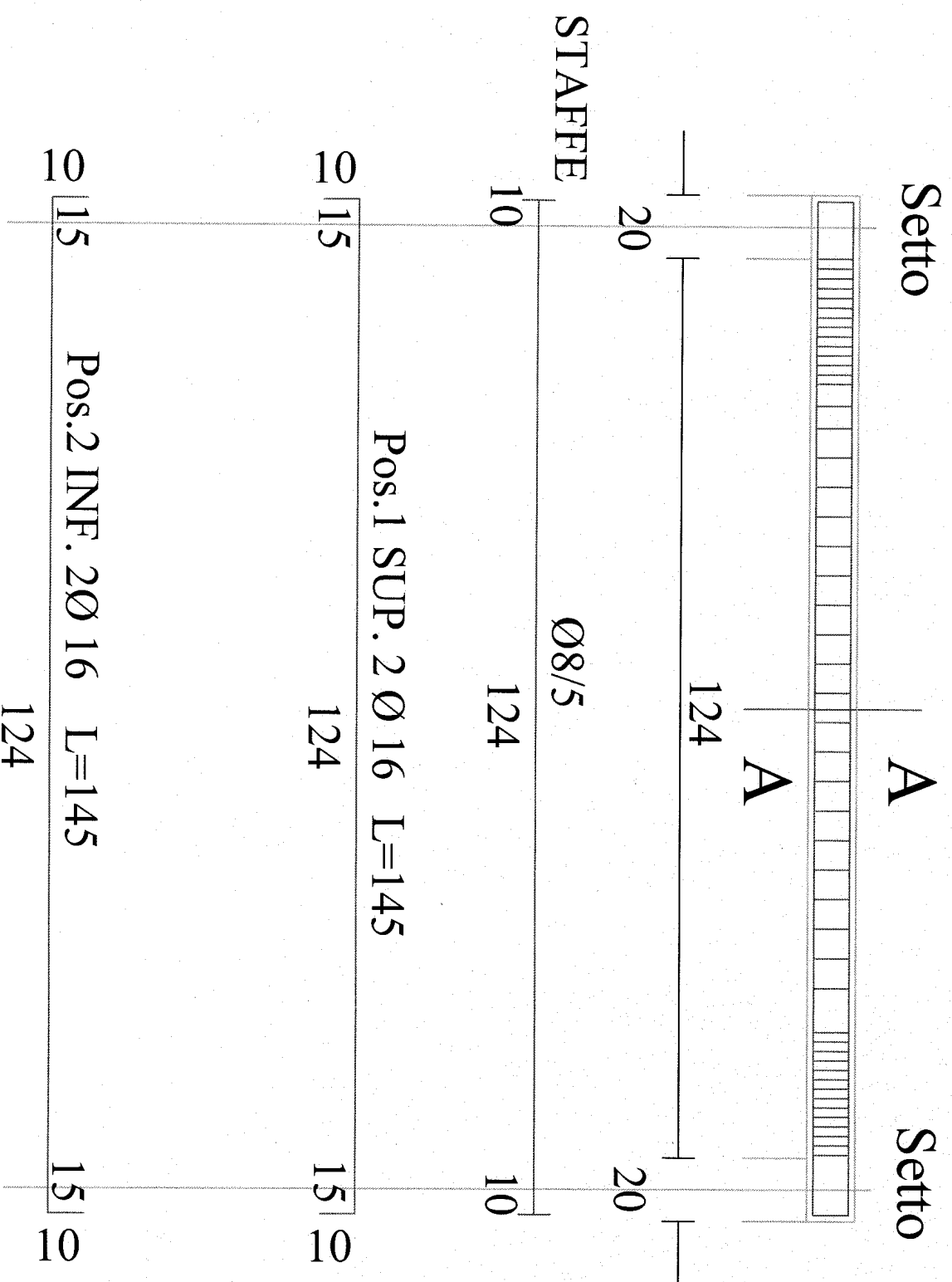
POS	DIAM Ø (mm)	LUNGH (cm)
1 SUP.	3 Ø 16	L=340
2 INF.	3 Ø 16	L=340

Sez. A-A



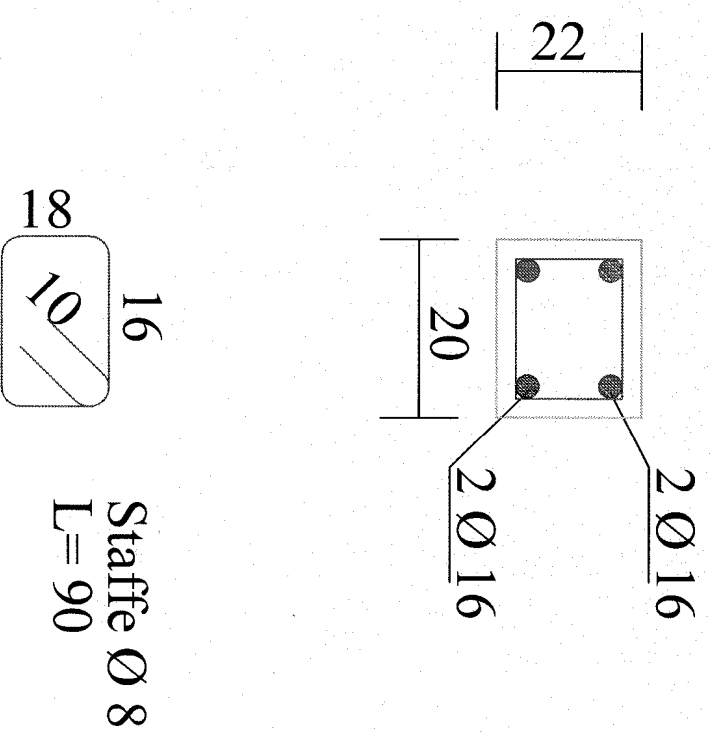
Trave D (20x22)

n° 2 travi



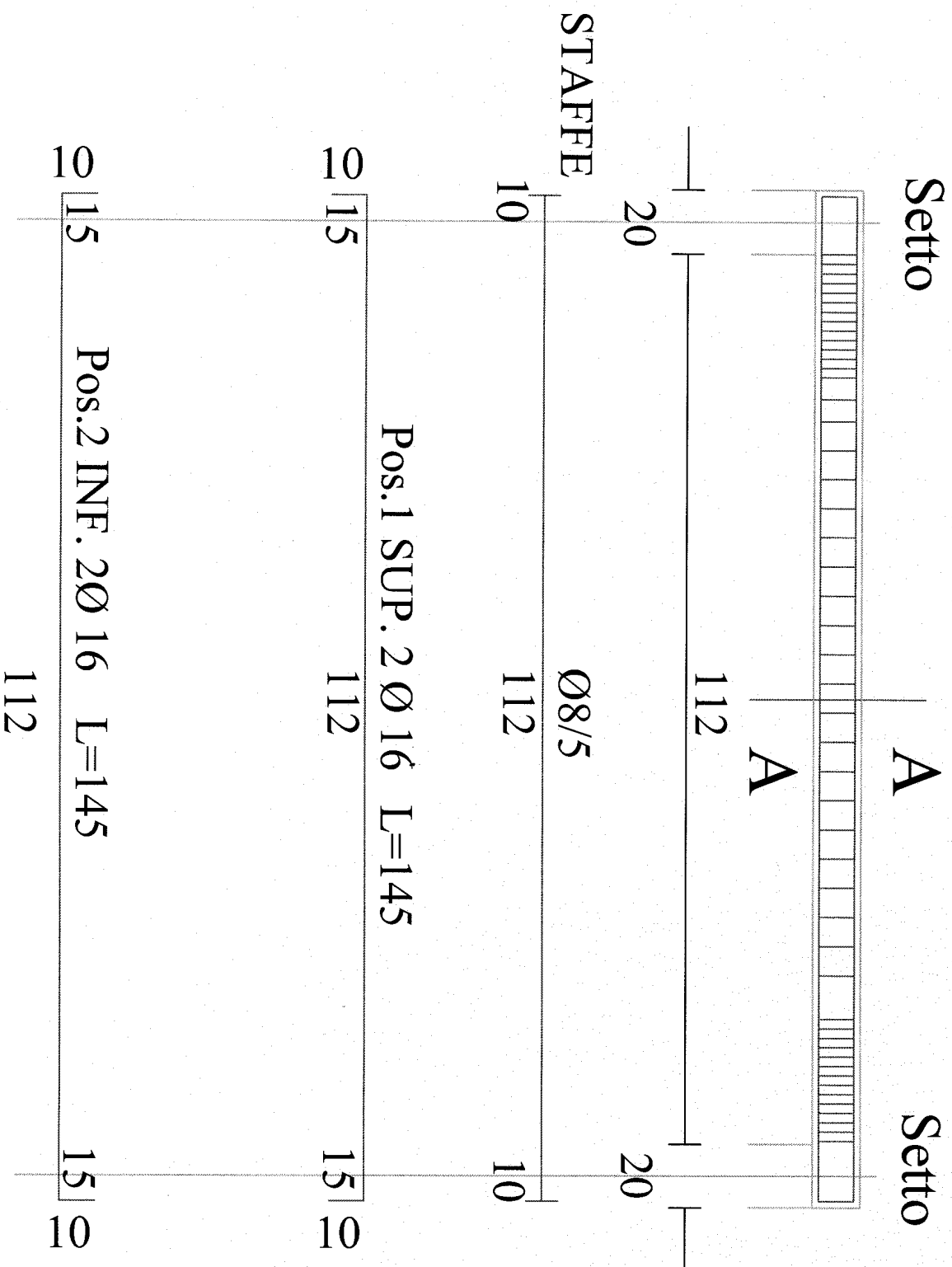
POS	DIAM Ø	LUNGH
	(mm)	(cm)
1 SUP.	2 Ø 16	L=174
2 INF.	2 Ø 16	L=174

Sez. A-A



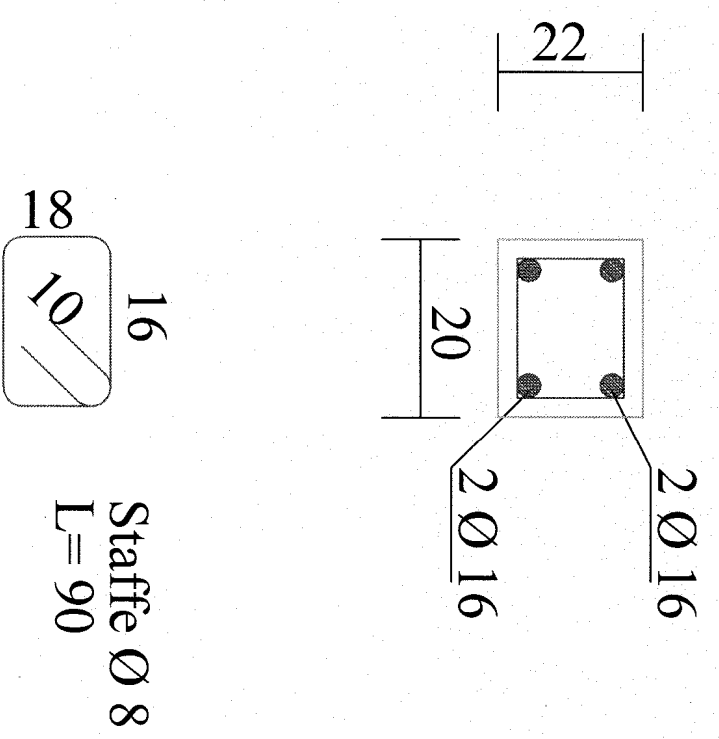
Trave F (20x22)

n° 1 trave



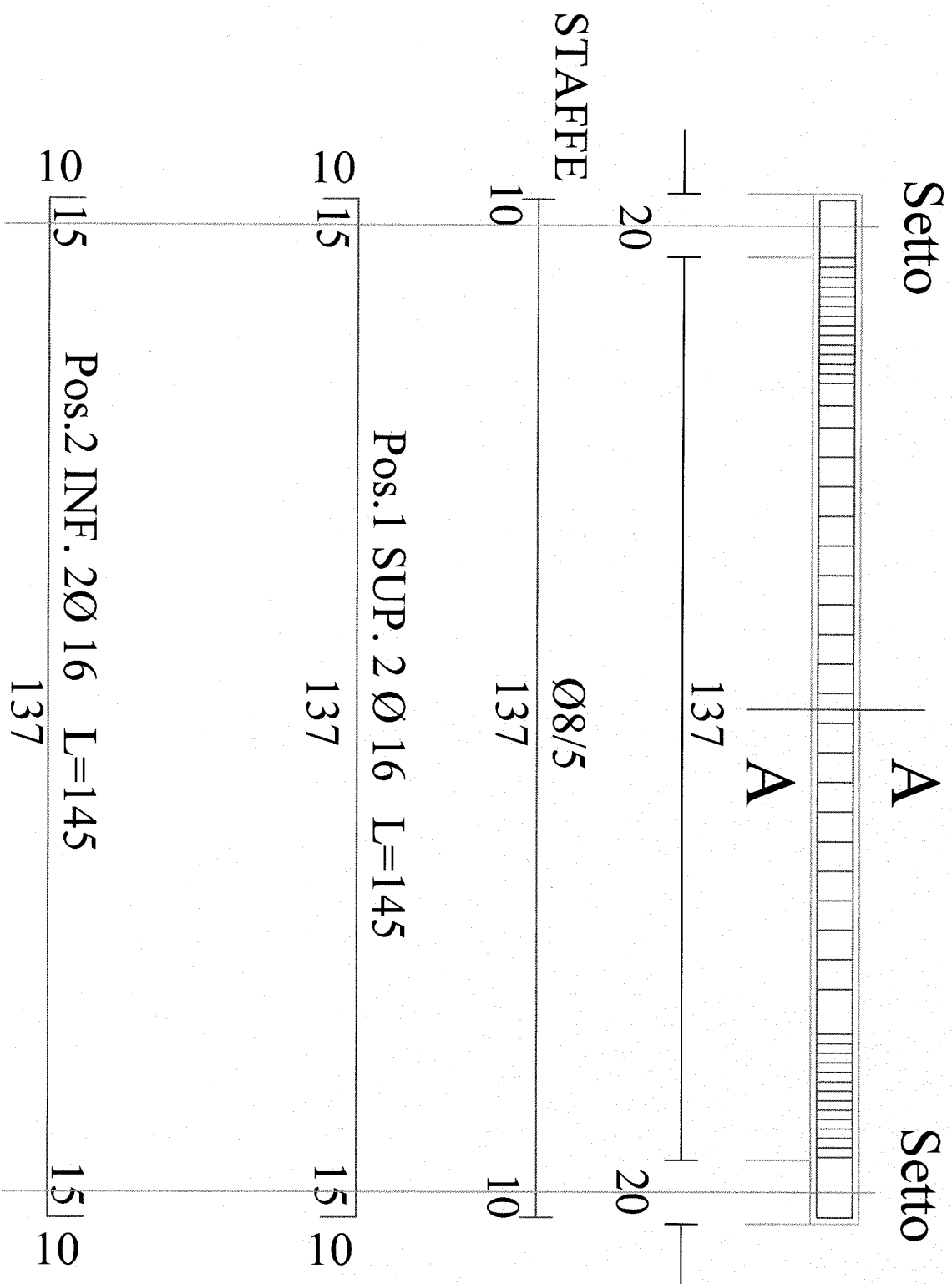
POS	DIAM Ø	LUNGH
	(mm)	(cm)
1 SUP.	2 Ø 16	L=162
2 INF.	2 Ø 16	L=162

Sez. A-A



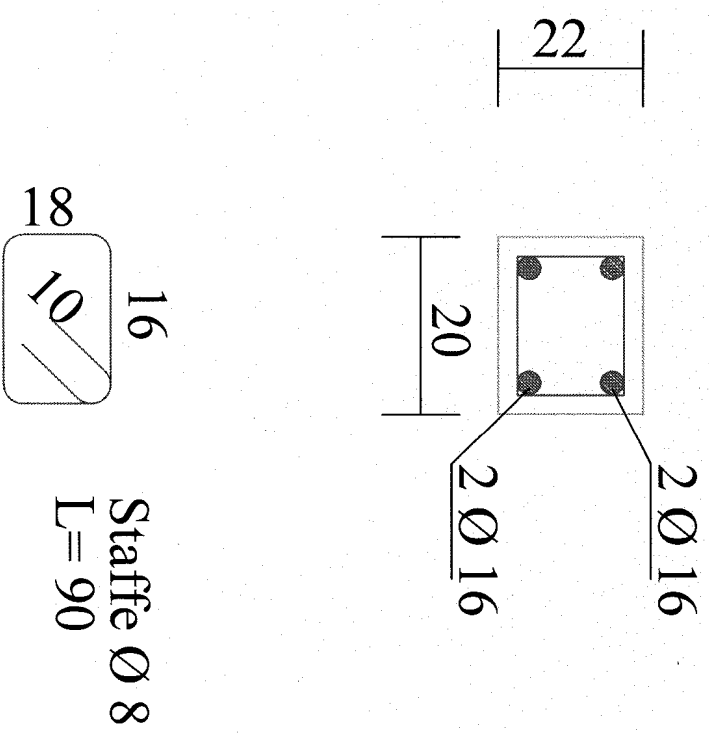
Trave H (20x22)

n° 1 trave



POS	DIAM Ø (mm)	LUNGH (cm)
1 SUP.	2 Ø 16	L=187
2 INF.	2 Ø 16	L=187

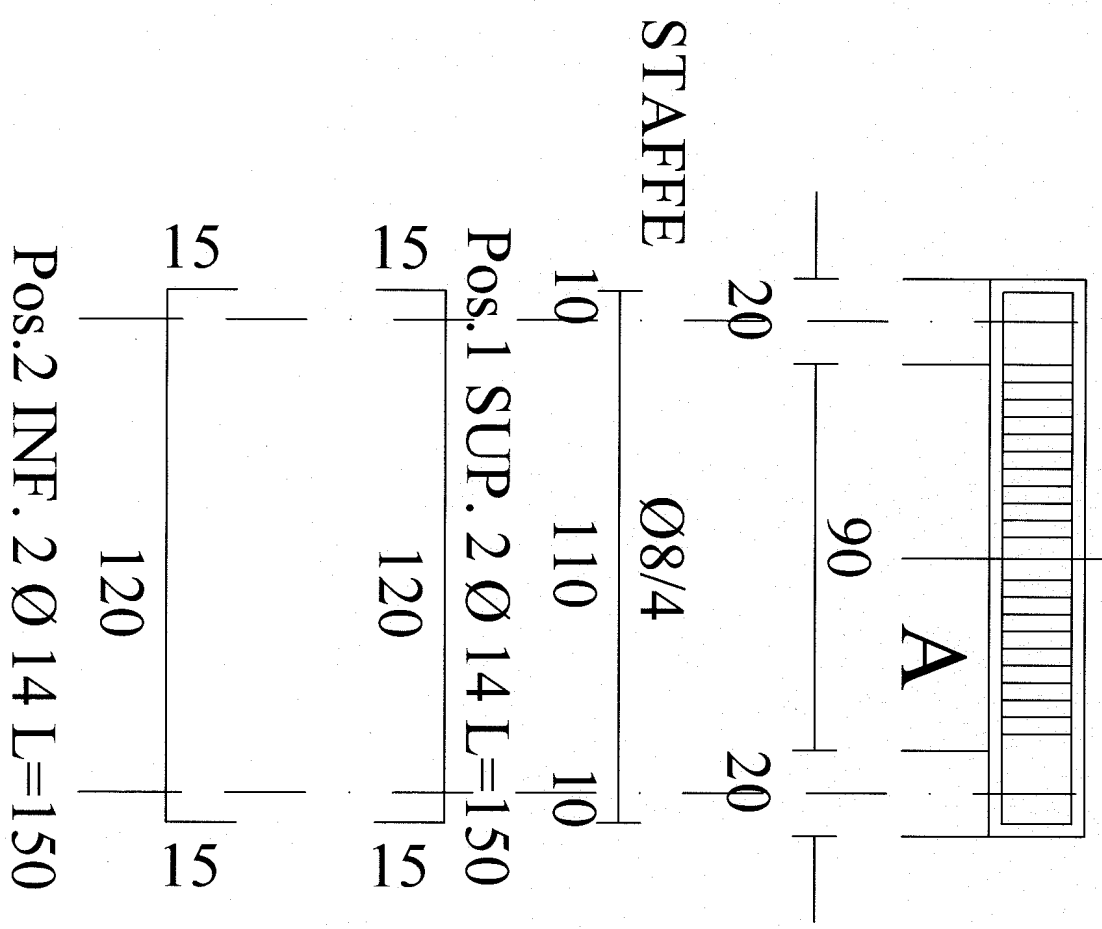
Sez. A-A



TL (20X22)

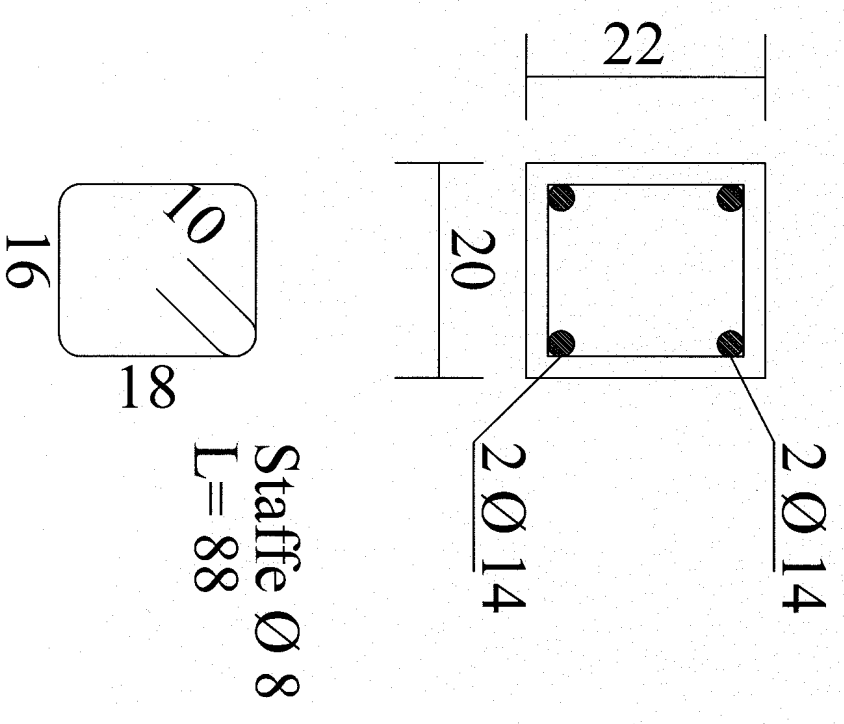
n° 2 Travi

Setto in c.a. | A | Setto in c.a.



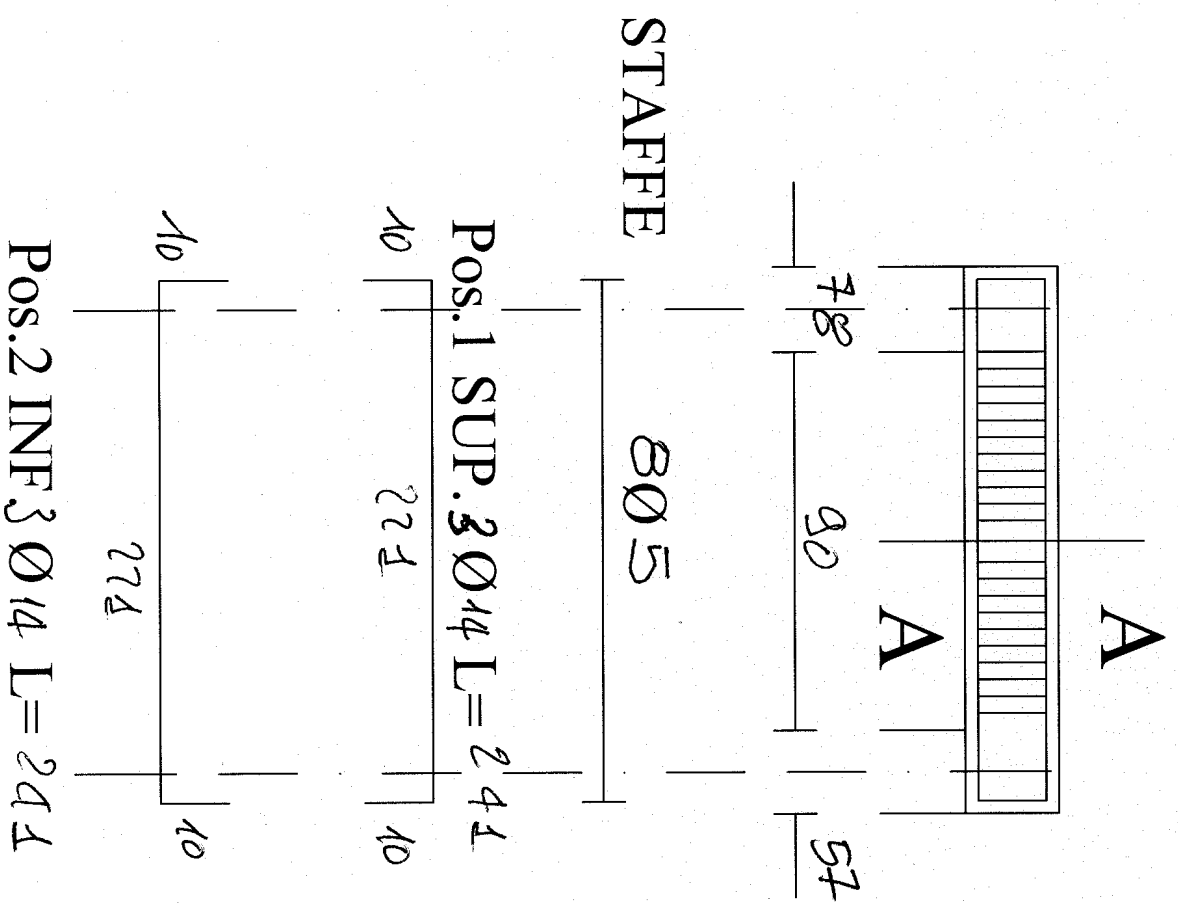
POS	DIAM Ø (mm)	LUNGH (cm)
1 SUP.	2 Ø 14	L=150
2 INF.	2 Ø 14	L=150

Sez. A-A



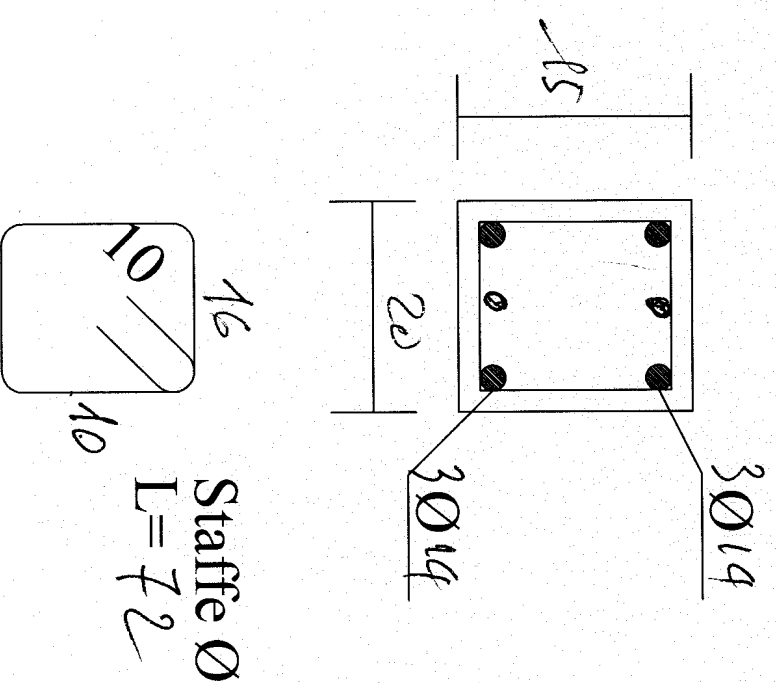
TM (20x15)

n° Travi



POS	DIAM Ø (mm)	LUNGH (cm)
1 SUP. 3	Ø14	L= 244
2 INF. 3	Ø14	L= 244

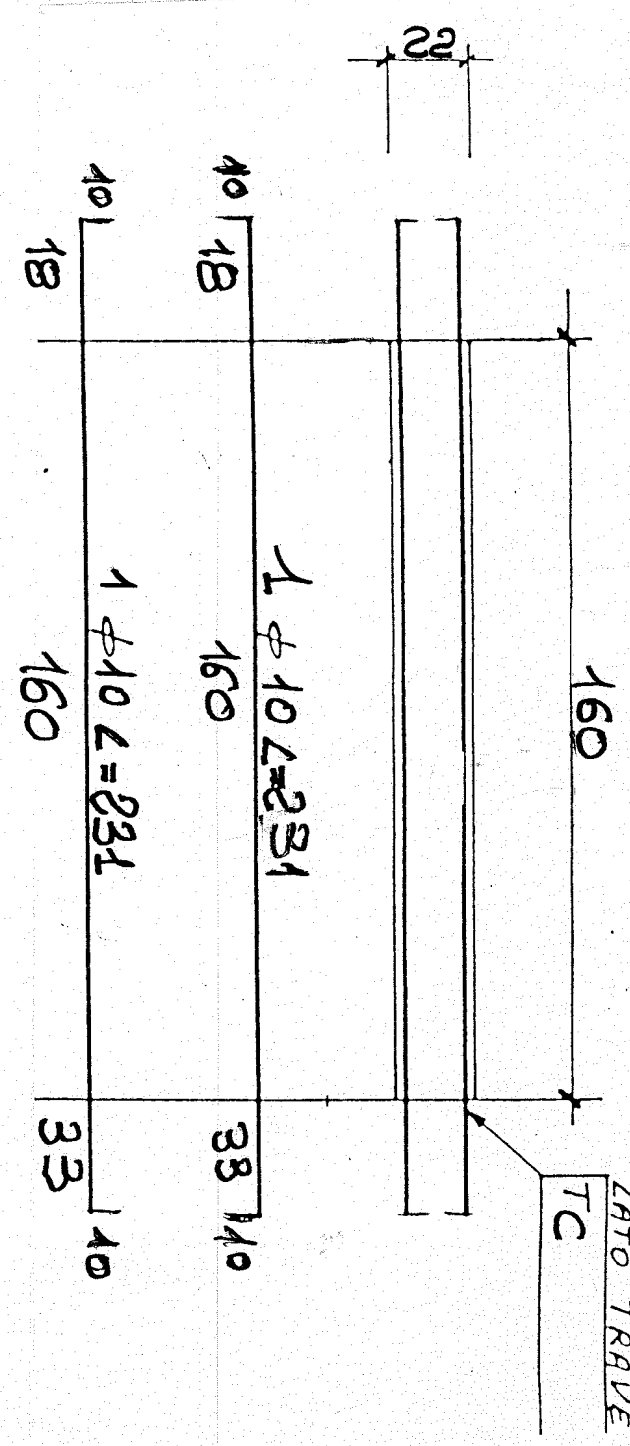
Sez. A-A



SOLRHO H.A

In ogni travetto:

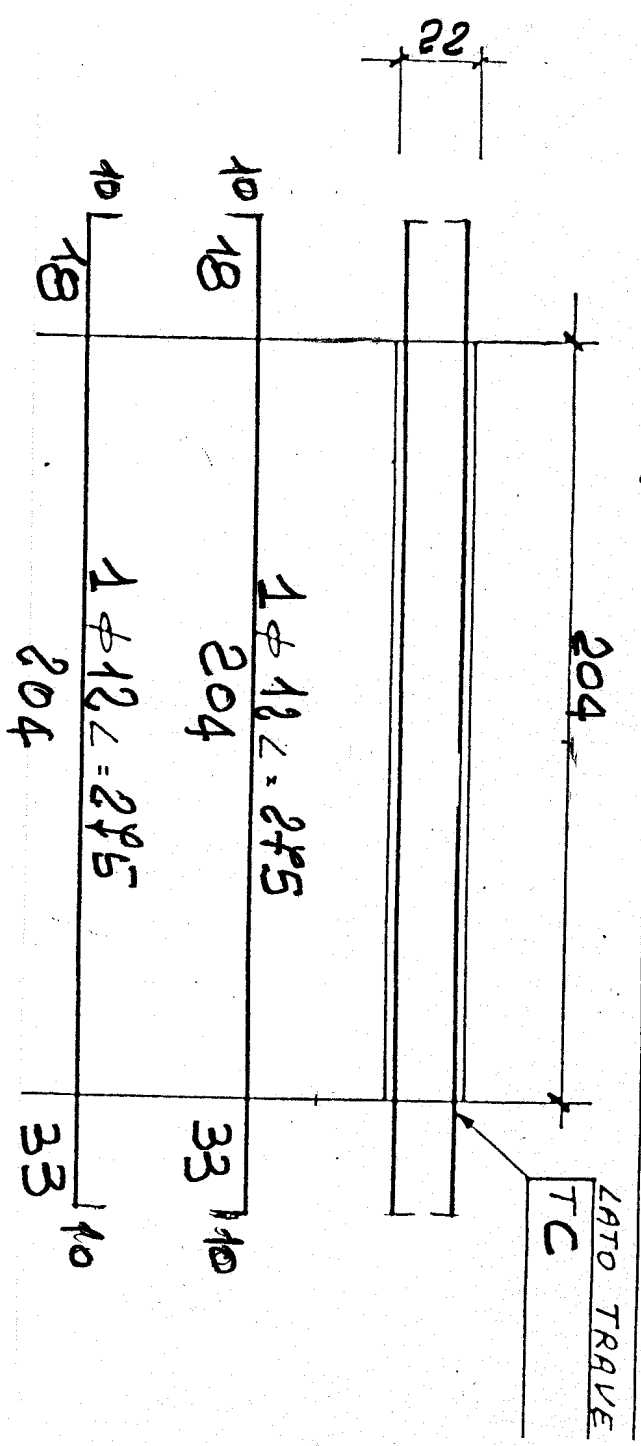
IN TUTTO H. 7 - TRAVETTI



SOLRHO H.B

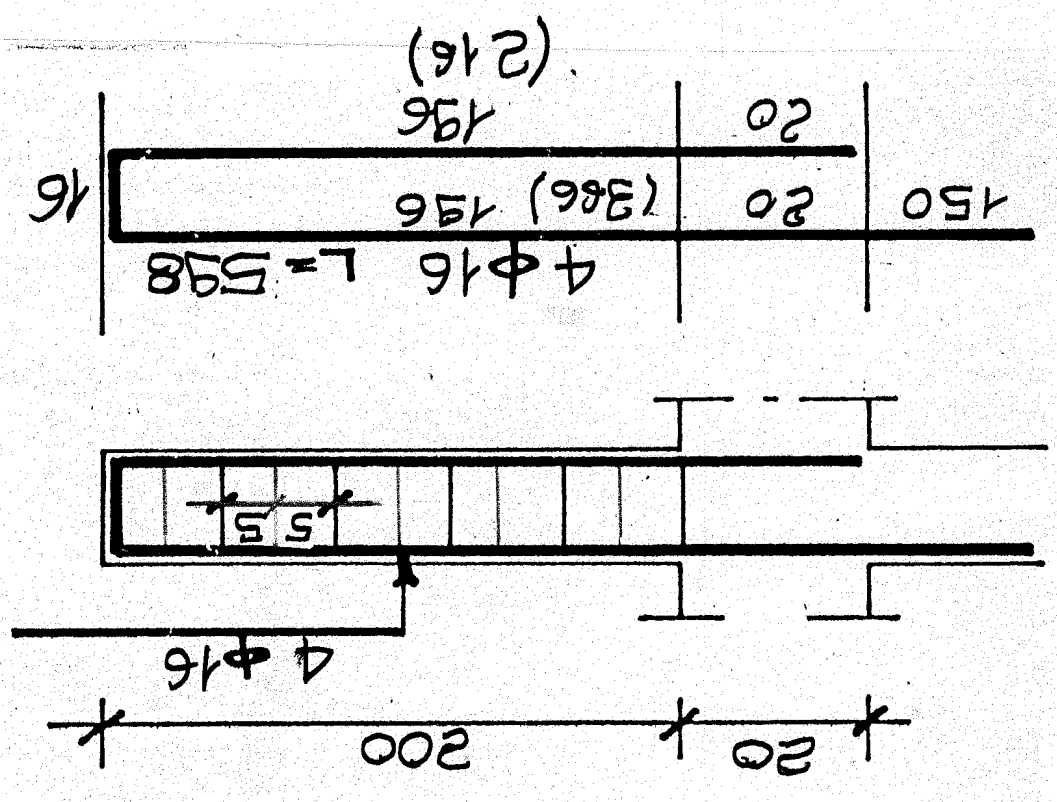
In ogni travetto:

IN TUTTO H. 7 - TRAVETTI

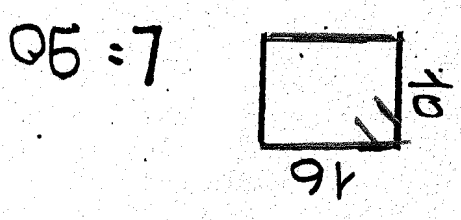


MURO TD (20x22)

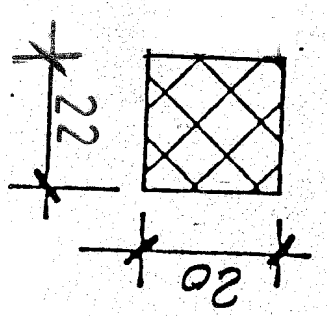
Nº 2 travetti



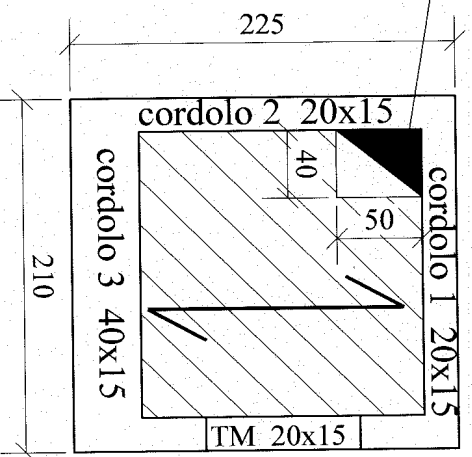
H. 41 stalli φ 8
passo 5 cm.



L: 90

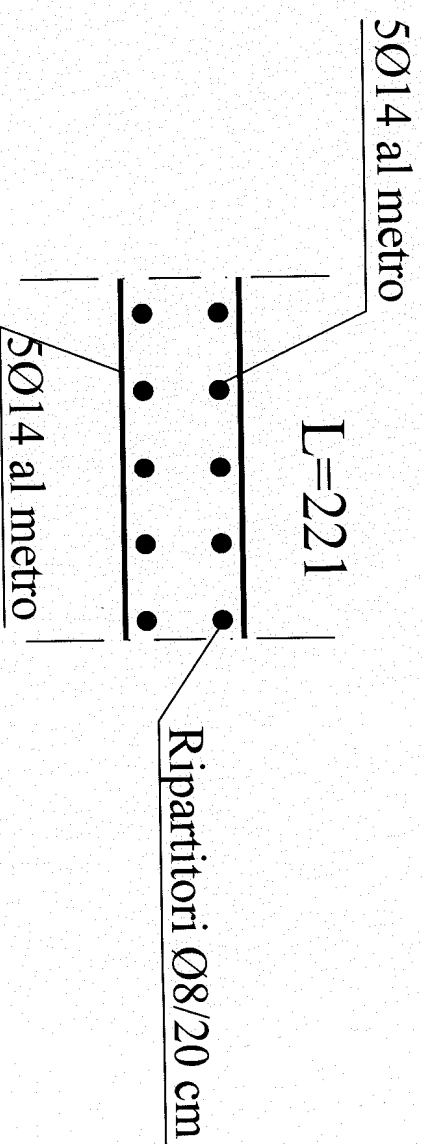


Foro esalazione vano ascensore. Verificare posizione e dimensioni in ragione della tipologia e della marca dell'ascensore.

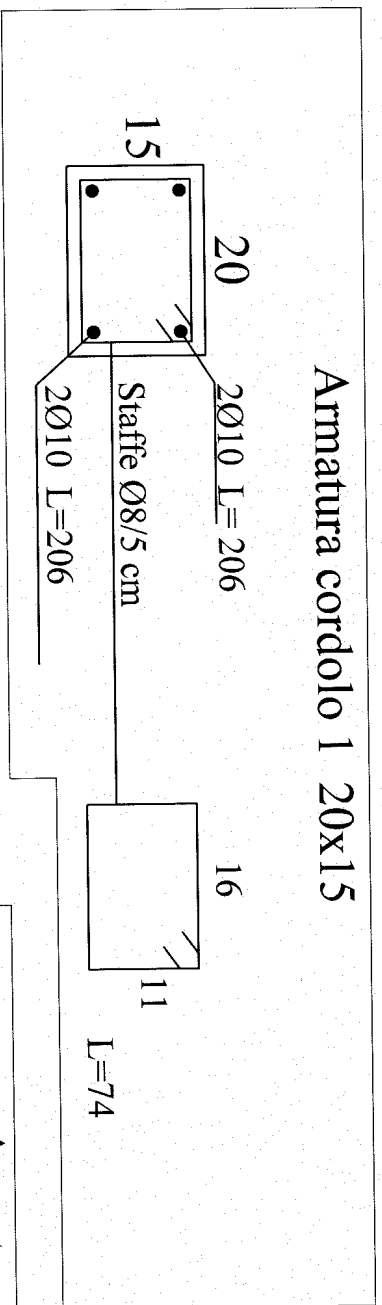


Pianta soletta copertura ascensore

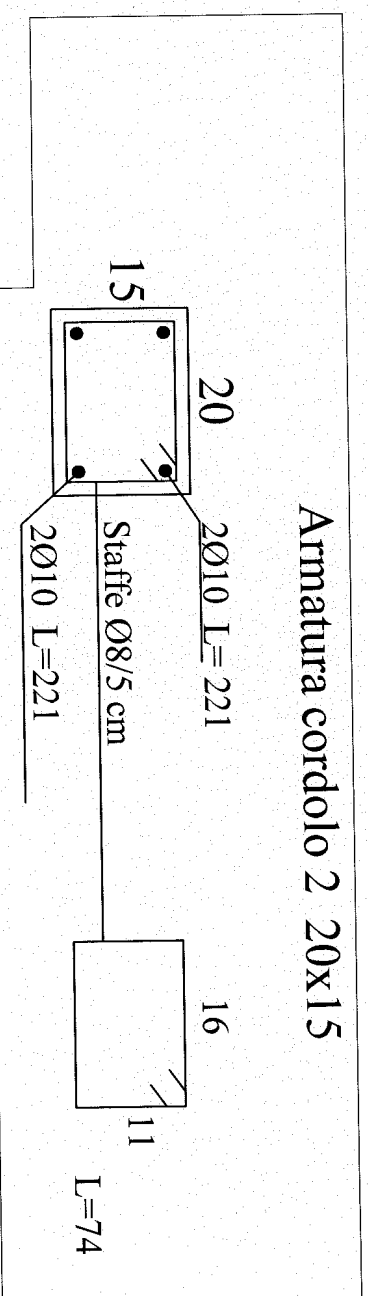
Soletta piena S = 15 cm



Armatura cordolo 1 20x15



Armatura cordolo 2 20x15



Armatura cordolo 3 40x15

