

201604439/62



All. 16

CITTA' DI TORINO

Direzione Servizi Tecnici per l'Edilizia Pubblica
Servizio Infrastrutture per il Commercio e lo Sport

Corso Ferrucci 122 - 10141 - Torino
Tel. 011 01125959 - Fax 011 01125852

MANUT. STR. e MESSA A NORMA IMPIANTO DI BASE PARCO RUFFINI
(CODICE OPERA 4297)



PROGETTO ESECUTIVO

PIANTA, SEZIONE, IMPIANTO ELETTRICO E IDRO SANITARIO
MODULO PREFABBRICATO WC

PROGETTISTI:

Arch. Luca Debernardi
Arch. Erica Ribetti

COLLABORATORI:

Geom. Guglielmo Lomonte

RESPONSABILE DELLA SICUREZZA IN FASE DI PROGETTAZIONE
(D. Leg. n. 81/08 ex art. 90 c. 3):

Arch. Vincenzo Orlando

ID FILE

SCALA 1/100 e 1/20

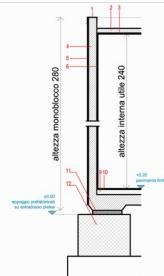
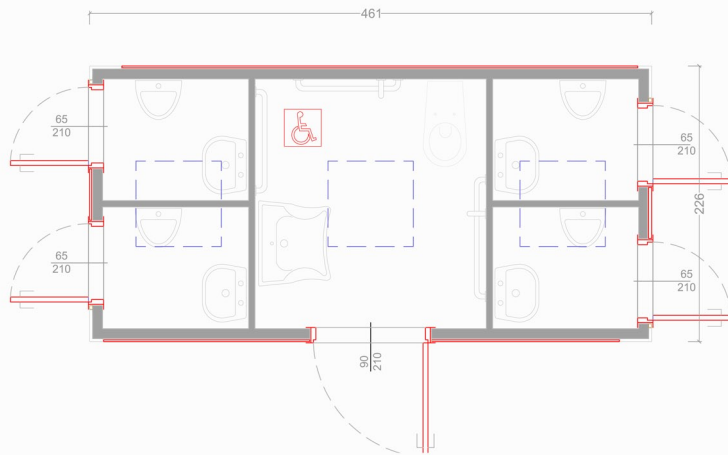
DATA agosto 2016

AGG.

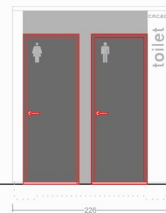
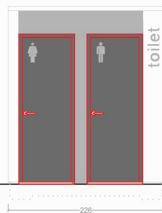
TAV_4.00

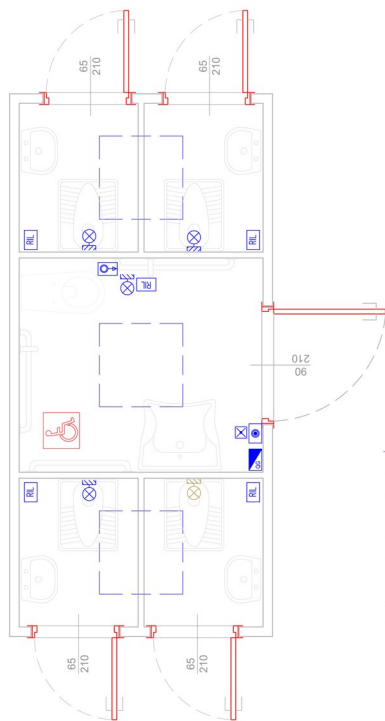
IL DIRIGENTE DEL SETTORE
INFRASTRUTTURE PER IL COMMERCIO
RESPONSABILE DEL PROCEDIMENTO

Ing. Eugenio Barbirato












1. scossalina in lamiera preverniciata
2. scolo
3. in poggiatesta con idropittura lavabile
4. pannello parete in c.a.p. s=10cm
5. finitura esterna parete a scelta D.L.
6. finitura interna parete a scelta D.L.
9. massetto c/a armato s=5cm
10. sovrimentazione interna a scelta D.L.
11. Sostegno rigido-discrimina
12. Piatte di fondazione





LEGENDA

	QUADRO ELETTRICO H 180 p.f.
	PULSANTE N/C 58L OCCO
	CHIAMATA WC DISABILI H 100 p.f.
	PLAFONIERA A PARETE 60/100 W H 225 p.f.
	LUCE EMERGENZA H 225 p.f.
	RILEVATORE PRESENZA
	PULSANTE N/A CHIAMATA WC DISABILI H 225 p.f.
	AVVISATORE OTTICO ACUSTICO
	CHIAMATA WC DISABILI H 225 p.f.
	PLAFONIERA A BASSO CONSUMO 1x18w H 225 p.f.

